

## P/N 744301/20

Hose reel with electric motorisation 24 V DC in AISI 304 stainless steel s. 700, for water, oil, diesel and industrial fluids, 70 bar, without hose. Drum width 410 mm. Inlet-outlet G 2" (f)

### SECTORS OF USE

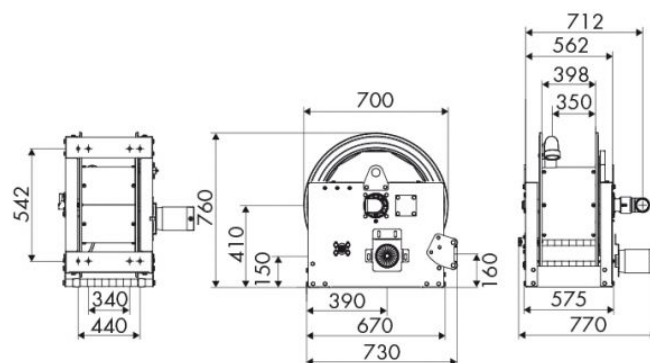
Industry, Mining, Lube trucks and transports

### FEATURES

|                   |  |
|-------------------|--|
| Pressure          | 70 bar                                       |
| Compatible fluids | water - oil - diesel fuel - industrial fluid |
| Swivel joint      | AISI 304 stainless steel                     |
| Seals             | Viton®                                       |
| Characteristic    | electric 24 V DC                             |
| Material          | AISI 304 stainless steel                     |
| Couplings         | -  |
| Hose              | -  |
| Ø e hose length   | -  |
| Inlet             | G 2" (f)                                     |
| Outlet            | G 2" (f)                                     |
| Reel flow path    | AISI 304 stainless steel                     |



### OVERALL DIMENSIONS (mm)



### FURTHER FEATURES

| Capacity 3/8" | Capacity 1/2" | Capacity 3/4" | Capacity 1" | Capacity 1.1/4" | Capacity 1.1/2" | Capacity 2" |
|---------------|---------------|---------------|-------------|-----------------|-----------------|-------------|
| 290 m         | 180 m         | 120 m         | 60 m        | 35 m            | 30 m            | 20 m        |